

STRUMIGENYS WILSONI species nov.

By William L. Brown, Jr.

Pilot Register of Zoology

Insecta: Hymenoptera: Formicidae

Department of Entomology & Limnology

Card No. 28

Cornell University

Issued 3 November 1969.

Ithaca, New York 14850, USA.

HOLOTYPE WORKER: TL 2.4, HL 0.62, HW 0.44 (CI 71), ML 0.26 (MI 42), WL 0.64, scape L 0.37, eye diameter 0.06, petiole L 0.25 mm. A member of the godeffroyi group with short, straight, broad mandibles, each with a narrowly lamellate inner margin, a single small preapical tooth, and two extremely minute intercalary denticles in the apical fork. Head convex above, with a faint median sulcus. Eyes only feebly convex, with only a slight suggestion of a preapical indentation; dorsolateral margin of head not indented above eye.

Truncus seen in profile biconvex, with a gentle concavity in the region of the posterior mesonotum-metanotum. Promesonotum with gently rounded humeri. Propodeal teeth small but acute, subtended by narrow concave infradental lamellae, hardly more than carinae. Petiole subclaviform, with a longish, low node that is slightly longer than broad; its spongiform appendages obsolete, represented only by a fine posterodorsal cariniform collar. Postpetiole about 1 1/2 times as broad as long, with fairly well developed spongiform appendages.

Head, entire truncus, petiole and postpetiole densely reticulate-punctate and opaque. Gaster smooth and shining, but with crowded longitudinal costulae extending from base nearly to midlength of first tergum.

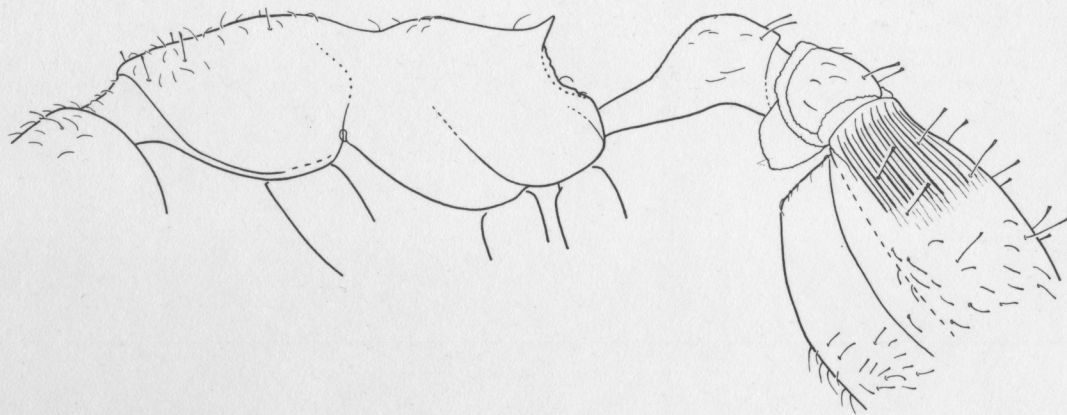
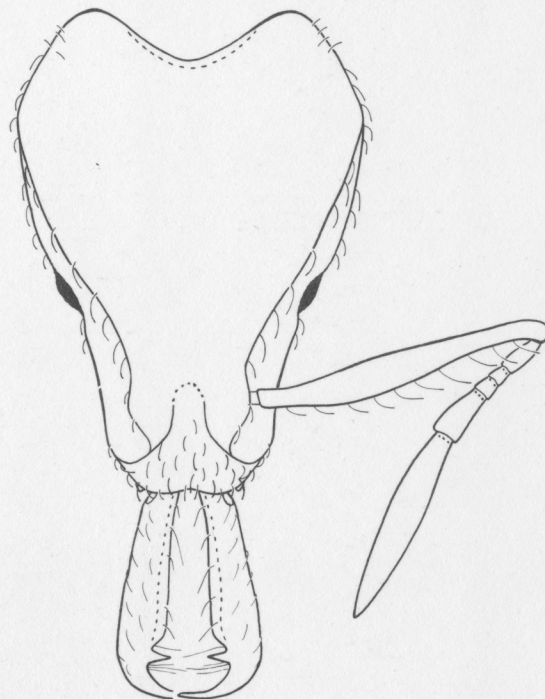
Ground pilosity consisting of fairly abundant short, truncate, erect and suberect hairs, mainly on head and promesonotum. Short, curved, feebly spatulate hairs forming a fringe on each dorsolateral border of head, on anterior clypeal margin, on inner mandibular margins, and on anterior borders of antennal scapes. Specialized erect hairs of moderate length, with truncate to feebly broadened apices: about 4 near posterodorsal margin of head, 3 pairs on promesonotum, a pair on each node, and about 30 on gastric dorsum. Short fine erect hairs beneath gaster and at its apex, and some fine, curved reclinate hairs on sides of propodeal declivity, on sides of petiole, and beneath gaster. Appendages with fine, inconspicuous appressed pubescence; apical antennal segment with 5-6 longer, pointed hairs.

Color light ferruginous, the gaster very slightly darker than the rest, appendages a little lighter.

HOLOTYPE a single worker (Museum of Comparative Zoology, Harvard University) taken in rain forest litter at Bisianumu, near Sogeri, Papua (500 m), 15 to 20 March 1955, E. O. Wilson leg.

After description, the type was accidentally brushed by forceps, and some of the longer erect hairs of head and truncus were knocked off. The left propodeal tooth is also broken (restored in the figure).

Though S. wilsoni is a member of the large godeffroyi group, it is hard to place it close to any other particular species of the group. The straight, broad mandibles and nude petiole distinguish it immediately from most of the species, and the completely sculptured pleura and nodes provide further separatory characters. The exact form of the alitrunk and petiole, and the pilosity pattern are also different from those of other godeffroyi group species.



Figures, Strumigenys wilsoni, holotype worker: Top, head in full-face view, only main fringing pilosity shown. Bottom, truncus, petiole, postpetiole and most of gaster, showing most of main pilosity. Drawings by Nancy Buffler and the author.

Published with the aid of the New York State College of Agriculture at Cornell University, and U. S. National Science Foundation Grant GB-5574X. Edited by W. L. Brown, Jr.