

**STRUMIGENYS PARANETES** species nov.

Insecta: Hymenoptera: Formicidae:  
Myrmicinae: Dacetini

William L. Brown, Jr.  
Department of Entomology  
Cornell University,  
Ithaca NY 14853, USA

Pilot Register of Zoology  
Card No. 43  
Issued 10 December 1988.

**DIAGNOSIS, WORKER:** Very similar to *S. anetes* (Card No. 42), but head and mandibles shorter, at least in the known area of sympatry (roughly, Atherton Tableland and adjacent mountains to the east); preocular indentation a bit stronger, so that the eyes are a little more prosopient, and the infradental lamellae of the propodeal declivity are wide and prevailingly convex in outline (compare figures offered here).

**WORKER, HOLOTYPE:** TL 2.9, HL 0.77, HW 0.53 (CI 69), ML 0.36 (MI 47), SL 0.46 (SI), EL 0.04, WL 0.75, petiole L 0.28 mm.

**WORKER, PARATYPES:** TL 2.8-2.9, HL 0.74-0.77, HW 0.51-0.53 (CI 68-69), ML 0.36-0.38 (MI 47-51), WL 0.70-0.75 mm.

Holotype (MCZ) from Australia, Queensland: Malanda, 6 and 7 Nov. 1950, leg. W. L. Brown, Jr., rain forest in rotten log. Paratypes

(MCZ, ANIC-Canberra, BMNH-London, CUIC-Ithaca) taken with holotype, and the following: Atherton, Dec. 1957 to Feb. 1958, leg. P. F. and P. J. Darlington. West slope of Mt. Bartle Frere, 900-1500 m, Dec. 1957, leg. Darlington. "Australia" (without locality), leg. T. E. Woodward.

The relationship of this species to *S. anetes* is discussed on Card No. 42.

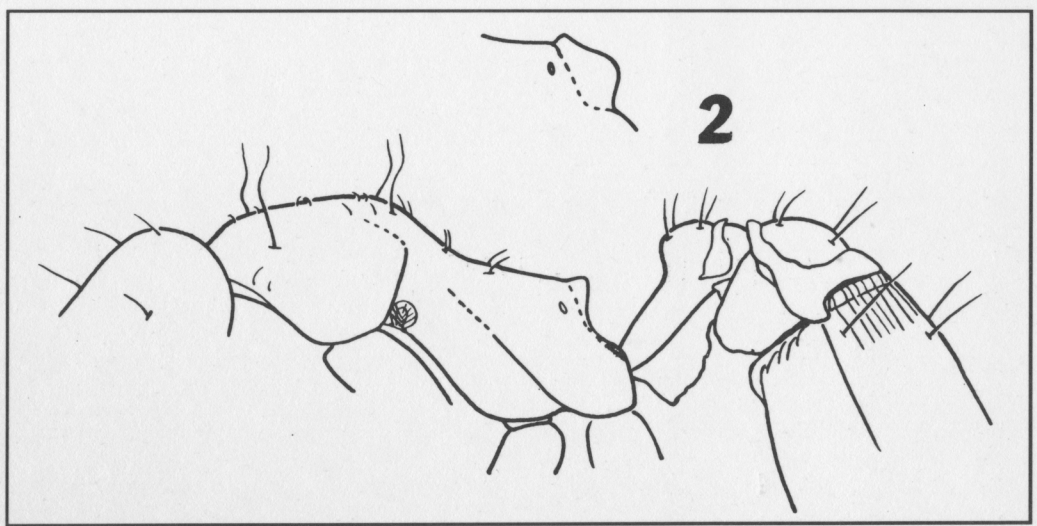
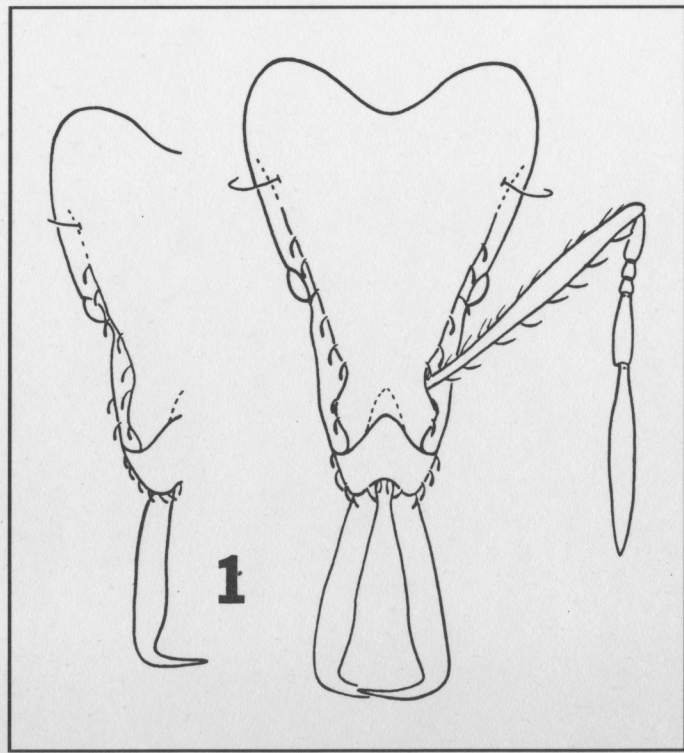


Fig. 1; left, half-outline of head and mandibles of *Strumigenys paranetes*, to compare with full outline of *S. anetes*, right; both paratype workers from Malanda, Queensland, showing only major fringing pilosity. Drawings by Nancy Buffler.

Fig. 2; inset, *Strumigenys paranetes*, left propodeal lamella in side view, to compare with side-view outline of *S. anetes*, below; the specimens are the same paratype workers shown in fig. 1. Drawings by Nancy Buffler.