

Description of the host ant of *Cossyphodinus bremeri* FERRER sp. nov.  
(Hymenoptera, Formicidae)  
by C. A. Collingwood

*Messor ferreri* COLLINGWOOD sp. nov.

Measurements of the holotype worker in mm: Total length 11.2, head length 2.82, head width 3.10, scape length 2.10, maximum eye length 0.47. Funiculus segment 1 : 2+3 = 32 : 37.

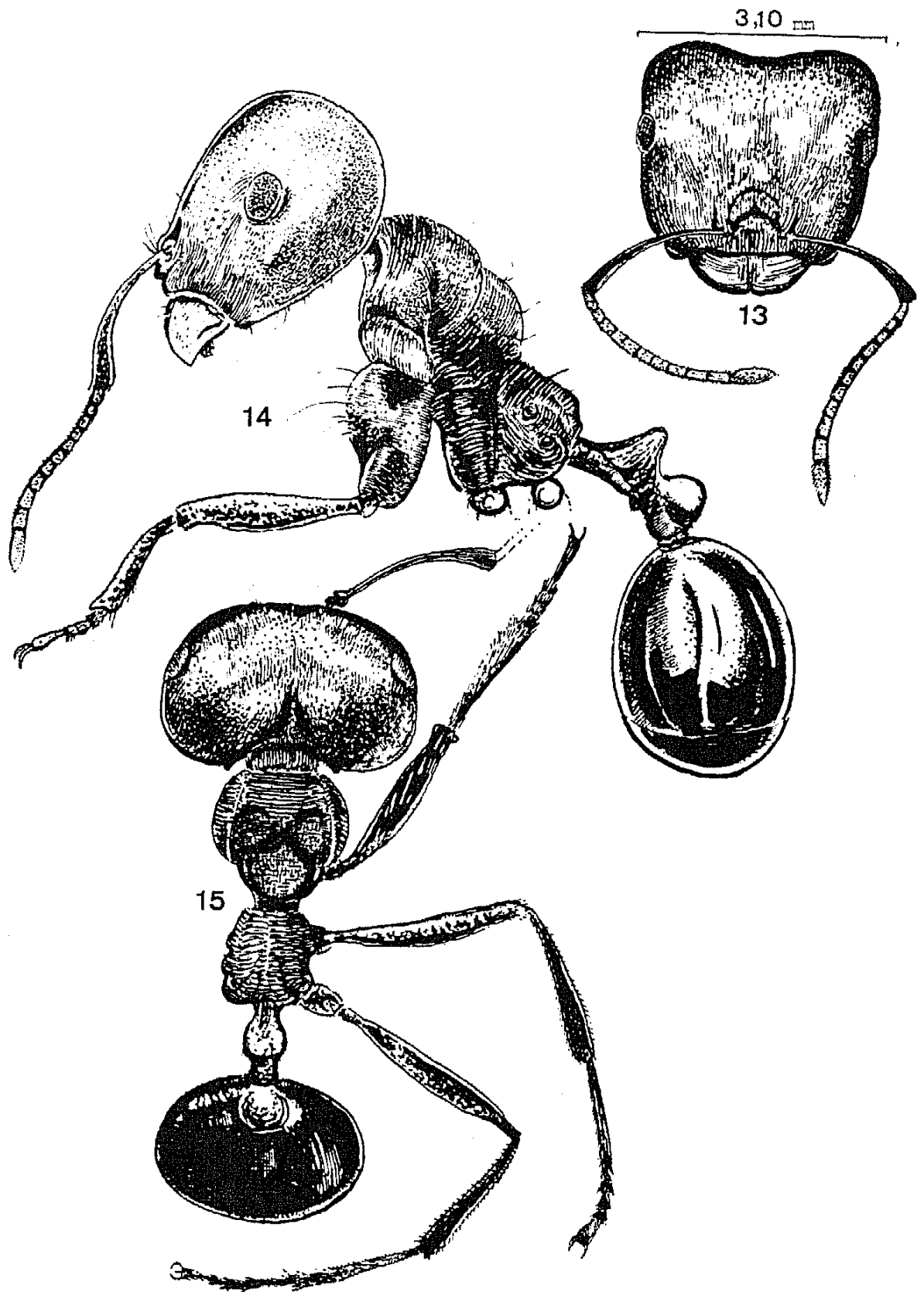
Head of usual *Messor* shape with very weakly indented clypeal border, almost square with rounded occipital corners and medially indented occipital margin. Propodeum obliquely angulate, unarmed. Antennal scape with subdecumbent hairs. Whole of head finely striate to occiput with a small area above the narrowest part of frons clear of sculpture apart from widely scattered small punctures. Whole of alitrunk reticulo-striate with the sides of the mesonotum and the whole of the propodeum strongly striate; petiole coarsely sculptured; postpetiole almost smooth; gaster completely smooth. Dorsum of head with a few scattered hairs, none on occipital margin and other hairs restricted to mandible base and clypeus which are coarsely sculptured. Propodeum with one suberect hair, dorsum of petiole and postpetiole without hairs. First gaster tergite hairless. Colour entirely black.

Paratype workers have variable head sculpture but with fine striae extending over at least half of dorsal surface. Eye size ranging from 0.153 - 0.19 X head width. Propodeum obliquely angled to rounded without dorsal hairs.

This species differs from *Messor angularis* SANTSCHI, 1914, by the much smaller eyes, the presence of several oblique hairs on the ventral surface of the hind femora and by the presence of an angular prominence on the antero-ventral surface of the postpetiole. It differs from *Messor galla* MAYR, 1904, by the absence of dorsal hairs on the petiole and postpetiole, the more sculptured head and the dark colour. These are the only two species redescribed by BOLTON (1982) in his revision of the Afrotropical *Messor* that in any way resemble *M. ferreri*. Another species, widespread in Arabia and the Middle East, *Messor ebeninus* FOREL, 1910, looks superficially similar but is of smaller size, has larger eyes and has a few dorsal hairs on the petiole, postpetiole and first gaster tergite (COLLINGWOOD 1986).

According to the data labels attached to the 4 specimens collected, *M. ferreri* was taken under a stone together with the inquiline beetle *Cossyphodinus bremeri* FERRER sp. nov. on the East face of Mt. Elgon, Kenya at 2.200 m. by H.J. BREMER, 23.vii.1988.

Holotype and 1 paratype in Zoologische Staatssammlung München, 1 paratype in Natural History Museum Stockholm, 1 paratype in coll. of the author.



Figs. 13-15 *Messor ferreri* COLLINGWOOD sp. nov.: 13) Head frontal; 14) Habitus lateral; 15) Habitus dorsal.

## References

- BASILEWSKY, P. - 1950. Descriptions de deux coléoptères myrmécophiles nouveaux de Katanga. Col. Cossyphodidae. - Rev. Bot. Zool. Africaine 63(1-2): 182-187.
- BOLTON, B. - 1982. Afrotropical species of the myrmicinae ant genera Cardiocondyla, Leptothorax, Melissotarsus, Messor and Cataulacus (Formicidae). - Bull. Brit. Mus., Ent. Ser. 45(4): 307-340.
- COLLINGWOOD, C.A. - 1986. Hymenoptera: Fam. Formicidae of Saudi Arabia. Fauna of Saudi Arabia, vol.7: 230-302.
- FERRER, J. - 1990. Una nueva especie de Cossyphodes (Westw.) de Kenya. (Col. Cossyphodidae). - Nouv. Rev. d'Ent. (N.S.) 7(2): 215-218.
- FOREL, A. - 1910. Glanures myrmecologiques. Formis de Palestine et de Syrie, récoltées par MM. Ernest Schmitz et Gadeau de Kerville. - Annals. Soc. Ent. Belgique. 56: 6-32.
- MAYR, G. - 1904. In Jägerskiöld, A. L. K. E. Results of the Swedish Zoological Expedition to Egypt and the Withe Nile (dec. 1900-july 1901), Part 1, section 6, Formiciden, 11 pp. Uppsala.
- SANTSCHI, F. - 1914. In Voyage de Ch. Alluaud et R. Jeannel en frique orientale. - Insectes Hymenoptères, 2. Formicidae, 43, 2 pl., 30 fgs. Paris.
- WASMANN, E. - 1899. Neue Termitophilen und Myrmecophilen aus Indien. - Dtsch. Ent. Zeitschr. 1: 162-165, pl.2.
- WESTWOOD, J.O. - 1850. Description of three new Genera of Exotic Coleoptera. - Trans. Soc. Ent. London: 168-171.

### Authors' addresses:

J. FERRER  
Stora hundensgata 631  
S-136 64 Haninge  
Sweden

C. A. COLLINGWOOD  
City Museum  
Leeds  
LS1 3AA England