

STRUMIGENYS ANETES species nov.

Insecta: Hymenoptera: Formicidae:  
Myrmicinae: Dacetini

**DIAGNOSIS, WORKER:** A member of the group of *S. godeffroyi* or of *S. doriae*, or an intermediate between them. From all other Australian species of *Strumigenys*, *S. anetes* and the closely related *S. paranetes*, described on Card No. 43, together differ in mandibular armament, which consists of the apical fork and a single minute, obtuse intercalary tooth, without any trace of a preapical tooth; mandibles diverge apicad at rest when fully closed. From *S. doriae*, *S. anetes* and *paranetes* differ in much smaller size (HL + ML < 1.3 mm, vs. > 1.4 mm in *S. doriae*), non-depressed vertexal lobes, much sparser standing pilosity, short promesonotum with respect to propodeal dorsum (about 2:1, vs. about 3:1 in *doriae*), in lack of "secretory patches" on sides of pronotum and mesonotum, so prominent in *doriae*, in the nearly or quite smooth and shining postpetiolar disc, vs. the sculptured and opaque disc of *doriae*, plus a number of other characters. *S. anetes* differs from *paranetes* in form of propodeal lamellae (compare figures). Possible differences may also exist in size, proportions of head and mandibles, and the development of a preocular notch, but these matters are complex and are saved for discussion below.

**HOLOTYPE, WORKER:** TL 3.1, HL 0.82, HW 0.56 (CI 68), ML 0.40 (MI 49), SL 0.56 (SI 100), eye L 0.06, WL 0.80, hind femur L 0.65, hind tibia L 3 0.51 mm.

William L. Brown, Jr.  
Department of Entomology  
Cornell University,  
Ithaca NY 14853, USA

Pilot Register of Zoology  
Card No. 42  
Issued 10 December 1988.

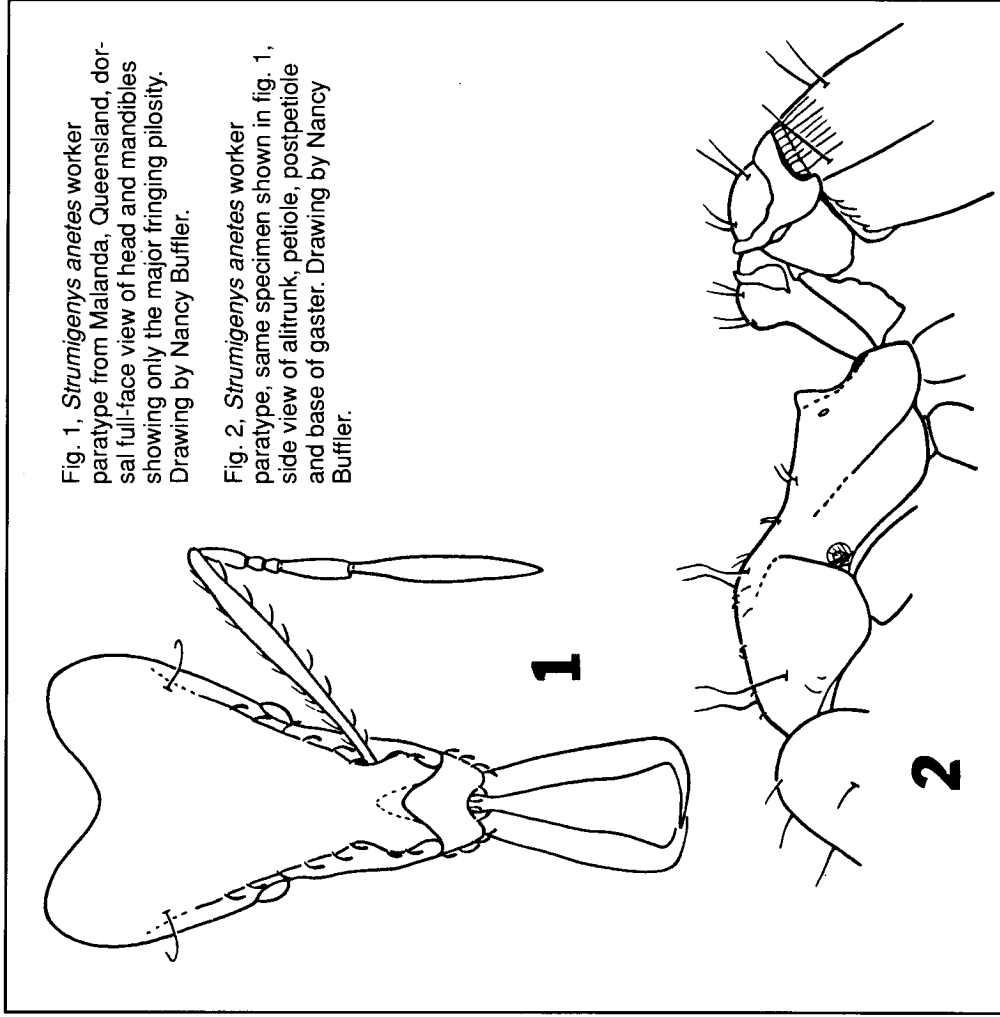


Fig. 1, *Strumigenys anetes* worker paratype from Malanda, Queensland, dorsal full-face view of head and mandibles showing only the major fringing pilosity. Drawing by Nancy Buffler.

Fig. 2, *Strumigenys anetes* worker paratype, same specimen shown in fig. 1, side view of alltrunk, petiole, postpetiole and base of gaster. Drawing by Nancy Buffler.